



Enzyme Research Laboratories

1801 Commerce Drive
South Bend, IN U.S.A. 46628
(574) 288-2268 * Fax (574) 288-2272
Website: www.enzymeresearch.com
Email: info@enzymeresearch.com

Murine Anti-Tissue Factor

Clone 320

Tissue factor is an integral membrane protein that- along with protease factor VIIa- initiates coagulation via cleavage of factor IX or factor X. Mab TFE binds human tissue factor in solid-phase ELISA.

Description

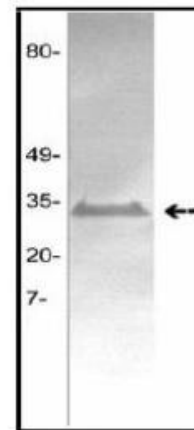
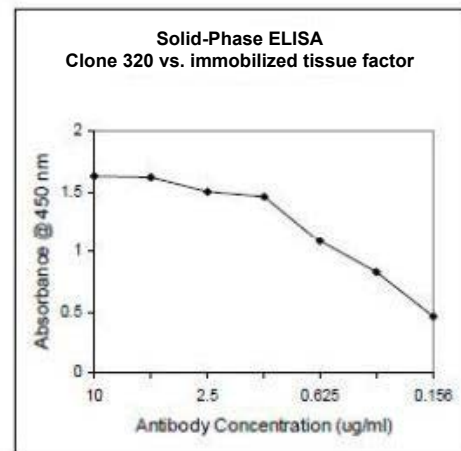
Antibody Source:	mouse monoclonal, IgG _{2a}
Antigen Species Bound:	human
Specificity:	extracellular domain of tissue factor
Immunogen:	human tissue factor

Formulation and Storage

Purity:	Purified by protein G affinity chromatography from serum-free cell culture supernatant.
Product Formulation:	Lyophilized from a ≥ 1 mg/ml solution in 20 mM NaH ₂ PO ₄ 0.15 M NaCl, 1.0% (w/v) mannitol, pH 7.4. Concentration determined by absorbance measurement at 280 nm and using an extinction coefficient of 1.4 ($\epsilon_{0.1\%}$).
Reconstitution:	Reconstitute with deionized water.
Storage:	Store lyophilized or reconstituted and aliquoted material at -20°C for prolonged periods. Avoid freeze-thaw cycles. Alternatively, add 0.02% (w/v) sodium azide to reconstituted solution and store at 4°C.
Country of Origin:	USA
Size Options:	0.1 mg or 0.5 mg

Applications

Working Concentration:	Approximately 1-5 μ g/ml. Researcher should titer antibody in specific assay.
ELISA:	Binds tissue factor.
Immunoblotting:	Binds human tissue factor, under reduced and non-reduced conditions.



References

- [1] K. Qian, F. Xie, A. W. Gibson, J. C. Edberg, R. P. Kimberly, J. Wu. Functional expression of IgA receptor Fc α RI on human platelets. (2008). *J Leukocyte Biol.* 84:1492-1500.