



## Murine Anti-Prothrombin

### Clone 095

Prothrombin is the vitamin K-dependent zymogen of thrombin. As a single chain protein (Mr 72,000) it contains 10 Gla residues, 2 kringle domains and three N-linked carbohydrate units. Prothrombin is activated to thrombin by the prothrombinase complex consisting of enzyme factor Xa, cofactor factor Va, phospholipid and Ca<sup>2+</sup>. Mab HFII binds human prothrombin in solid-phase ELISA and western blot.

### Description

**Antibody Source:** mouse monoclonal, IgG<sub>1</sub>

**Antigen Species Bound:** human

**Specificity:** prethrombin-1 (residues 272-579 of prothrombin)

**Immunogen:** human prothrombin

### Formulation and Storage

**Purity:** Purified by protein G affinity chromatography from serum-free cell culture supernatant.

**Product Formulation:** Lyophilized from a ≥1 mg/ml solution in 20 mM NaH<sub>2</sub>PO<sub>4</sub> 0.15 M NaCl, 1.0% (w/v) mannitol, pH 7.4. Concentration determined by absorbance measurement at 280 nm and using an extinction coefficient of 1.4 (ε<sub>0.1%</sub>).

**Reconstitution:** Reconstitute with deionized water.

**Storage:** Store lyophilized or reconstituted and aliquoted material at -20°C for prolonged periods. Avoid freeze-thaw cycles. Alternatively, add 0.02% (w/v) sodium azide to reconstituted solution and store at 4°C.

**Country of Origin:** USA

**Size Options:** 0.1 mg or 0.5 mg

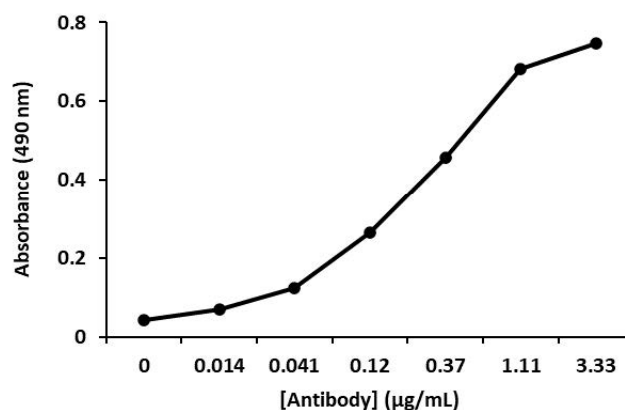
### Applications

**Working Concentration:** Approximately 1-5 µg/ml. Researcher should titer antibody in specific assay.

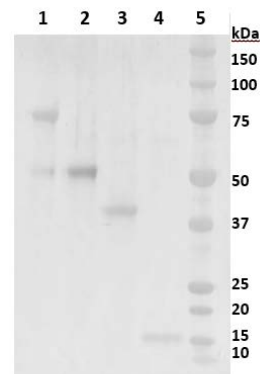
**ELISA:** Binds prothrombin, as well as prethrombin-1, fragment 1.2 and fragment 2.

**Immunoblotting:** Binds the prethrombin, as well as prethrombin-1, fragment 1.2 and fragment 2.

#### Clone 095 binding Human Prothrombin in ELISA



#### Western blot of reduced proteins, 5 µg/mL Clone 095



- 1) prothrombin
- 2) prethrombin-1
- 3) fragment 1.2
- 4) fragment 2
- 5) molecular weight marker