



## Murine Anti-Thrombin

### Clone 020

Thrombin, the protease cleavage product of prothrombin by prothrombinase, is a two-chain protein (Mr 37,000) consisting of an amino-terminal A chain (Mr 6,000) disulfide-bonded to a carboxyl-terminal B chain (Mr 31,000). Thrombin has numerous physiological roles including cleavage of A $\alpha$  and B $\beta$  peptides of fibrinogen to form fibrin, activation of factor V, factor VIII, and protein C, and platelet activation via cleavage of PAR-1 and PAR-4. Antibody binds immobilized human thrombin, prothrombin, prethrombin 1 and prethrombin 2 in ELISA.

#### Description

<b>Antibody Source:</b>	mouse monoclonal, IgG <sub>1</sub>
<b>Antigen Species Bound:</b>	human
<b>Specificity:</b>	$\alpha$ -thrombin B-chain (residues 321- 579 of prothrombin)
<b>Immunogen:</b>	human thrombin

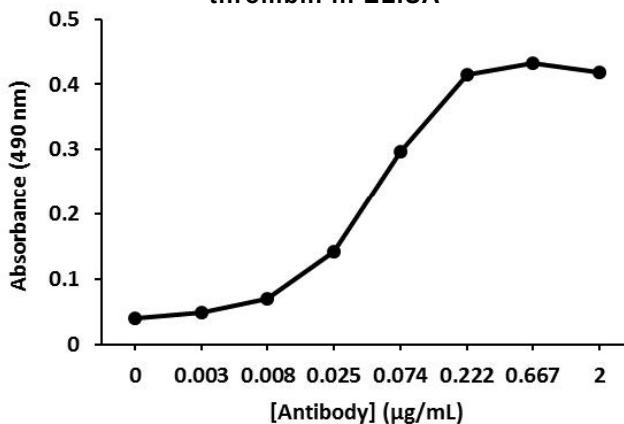
#### Formulation and Storage

<b>Purity:</b>	Purified by protein G affinity chromatography from serum-free cell culture supernatant.
<b>Product Formulation:</b>	Lyophilized from a $\geq 1$ mg/ml solution in 20 mM NaH <sub>2</sub> PO <sub>4</sub> 0.15 M NaCl, 1.0% (w/v) mannitol, pH 7.4. Concentration determined by absorbance measurement at 280 nm and using an extinction coefficient of 1.4 ( $\epsilon_{0.1\%}$ ).
<b>Reconstitution:</b>	Reconstitute with deionized water.
<b>Storage:</b>	Store lyophilized or reconstituted and aliquoted material at -20° C for prolonged periods. Avoid freeze-thaw cycles. Alternatively, add 0.02% (w/v) sodium azide to reconstituted solution and store at 4° C.
<b>Country of Origin:</b>	USA
<b>Size Options:</b>	0.1 mg or 0.5 mg

#### Applications

<b>Working Concentration:</b>	Approximately 1-5 $\mu$ g/ml. Researcher should titer antibody in specific assay.
<b>ELISA:</b>	Binds immobilized human thrombin, prothrombin, prethrombin 1 and prethrombin 2.
<b>Immunoblotting:</b>	Binds thrombin, prothrombin, prethrombin 1 and prethrombin 2.

Clone 020 binding thrombin in ELISA



Clone 020 Western blot of thrombin

